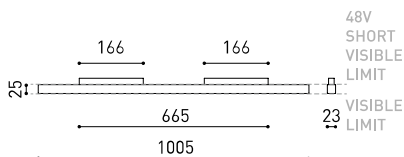




## Dimensiones



## Accesorios



TRACK 48V OPTIONS

Nombre	LINE 1000 48V 3000K N
Referencia	A3762011N
Color	Negro Mate
RAL	Anodizado, baño de color, similar a RAL 9005
Categoría	TRACK LIGHTS

Tipo	LED
Flujo luminoso	3200 lm
Temperatura de color	3000 K
Estabilidad cromática	MacAdam Step 2
Índice de reproducción cromática	CRI>90
Potencia	21 W
Corriente	700 mA
Eficacia	152 lm/W
Horas de vida del LED	L80B10 >60.000h
Eficiencia energética	D

Eficiencia lumínica	43%
Ángulo del haz de luz	98°

Potencia del sistema	22,56 W
Tensión	48Vdc
Regulación	No Dim
Clase de seguridad eléctrica	III

Estanqueidad	IP20
Control inalámbrico	Consultar
Tipo de carril	Track 48V
Peso	445 g
Peso con embalaje	795 g
Dimensiones embalaje	Ø55 x 1050 mm
Unidades por embalaje	1
Materiales	Aluminio / Policarbonato

## PRODUCTO

## FUENTE DE LUZ

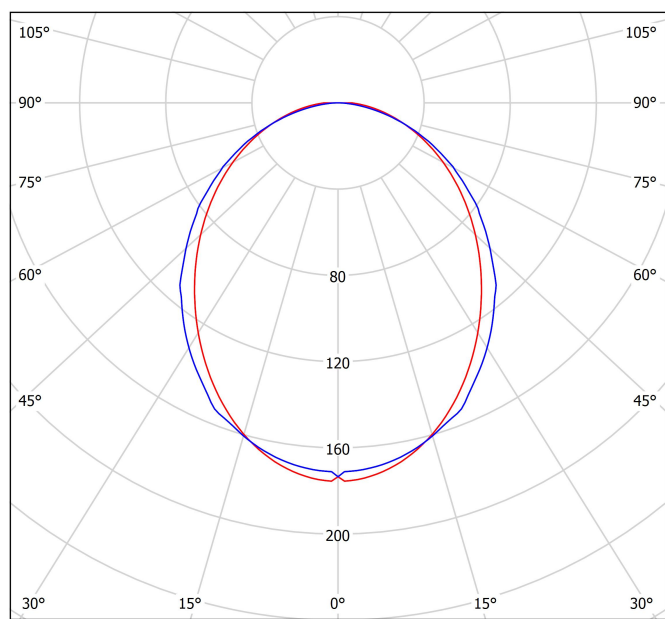
## LUMINARIA | DATOS FOTOMÉTRICOS

## LUMINARIA | DATOS ELÉCTRICOS

## OTROS DATOS

Line 48V es la luminaria lineal de luz difusa para aplicación en carril de bajo voltaje 48V. Esta solución traslada a este sistema de carril las características lumínicas y las ventajas de la iluminación longitudinal con difusor para aplicaciones de luz general.

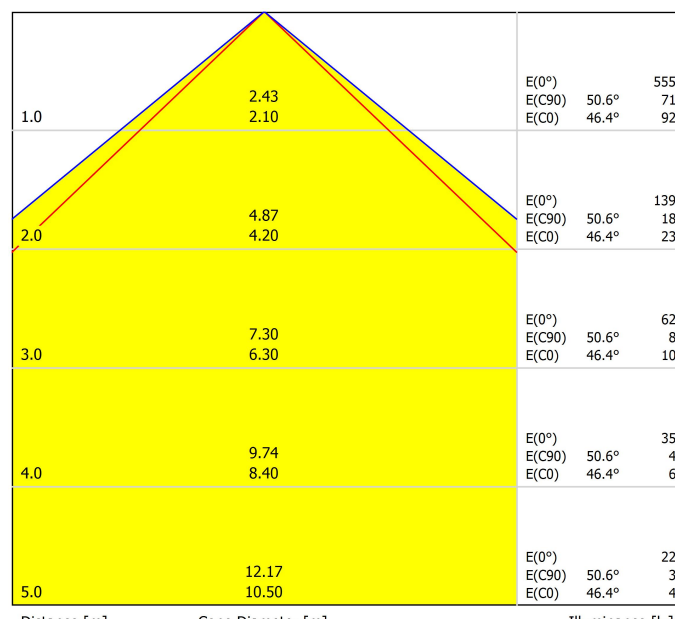
## Diagrama polar



cd/klm  
 — C0 - C180 — C90 - C270

η = 43%

## Diagrama cónico



Distance [m] Cone Diameter [m] Illuminance [lx]  
 — C0 - C180 (Half-value Angle: 92.8°)  
 — C90 - C270 (Half-value Angle: 101.2°)

## UGR

Glare Evaluation According to UGR											
ρ Ceiling	70	70	50	50	30	70	70	50	50	30	
ρ Walls	50	30	50	30	30	50	30	50	30	30	
ρ Floor	20	20	20	20	20	20	20	20	20	20	
Room Size X Y	Viewing direction at right angles to lamp axis					Viewing direction parallel to lamp axis					
2H	2H	22.3	23.6	22.6	23.8	24.0	22.7	24.0	23.0	24.2	24.4
	3H	24.1	25.2	24.4	25.5	25.8	24.4	25.6	24.7	25.8	26.1
	4H	24.8	25.9	25.1	26.2	26.5	25.0	26.1	25.4	26.4	26.7
	6H	25.4	26.5	25.8	26.8	27.1	25.5	26.5	25.8	26.8	27.1
	8H	25.7	26.7	26.1	27.0	27.3	25.6	26.6	26.0	26.9	27.2
4H	2H	22.9	24.0	23.2	24.3	24.6	23.2	24.3	23.6	24.6	24.9
	3H	24.9	25.9	25.3	26.2	26.5	25.2	26.1	25.5	26.4	26.8
	4H	25.8	26.6	26.2	27.0	27.3	25.9	26.8	26.3	27.1	27.5
	6H	26.6	27.3	27.0	27.7	28.1	26.5	27.3	26.9	27.6	28.0
	8H	26.9	27.6	27.4	28.0	28.4	26.7	27.4	27.2	27.8	28.2
8H	2H	27.3	27.9	27.7	28.3	28.7	26.8	27.5	27.3	27.9	28.3
	4H	26.1	26.8	26.6	27.2	27.6	26.3	26.9	26.7	27.3	27.8
	6H	27.1	27.7	27.6	28.1	28.5	27.0	27.6	27.5	28.0	28.5
	8H	27.6	28.1	28.0	28.5	29.0	27.3	27.8	27.8	28.2	28.7
	12H	28.0	28.5	28.5	28.9	29.4	27.5	27.9	28.0	28.4	28.9
12H	4H	26.2	26.8	26.6	27.2	27.6	26.3	26.9	26.8	27.3	27.8
	6H	27.2	27.7	27.7	28.1	28.6	27.1	27.6	27.6	28.1	28.5
	8H	27.7	28.1	28.2	28.6	29.1	27.5	27.9	28.0	28.4	28.9
Variation of the observer position for the luminare distances S											
S = 1.0H	+0.1 / -0.1					+0.1 / -0.1					
S = 1.5H	+0.2 / -0.3					+0.2 / -0.3					
S = 2.0H	+0.3 / -0.7					+0.4 / -0.7					
Standard table	BK07					BK06					
Correction Summand	3.7					3.3					
Corrected Glare Indices referring to 3200lm Total Luminous Flux											

# Track 48V

# ARKOSLIGHT

48V track lighting systems are low-voltage lighting solutions based on electrified tracks. The track serves both as a physical structure and as a power carrier, allowing light modules to be placed and repositioned as needed, offering flexibility, safety, and energy efficiency. Ideal for projects that demand minimalist design, high performance, and adaptability. To configure your 48V system, you'll need to combine the following components:

1. Tracks - Available in surface, trimless, surface short, suspended (using suspension accessories with the surface track), and indirect light versions. They form the structural and electrical base of the system.
2. Connectors & Power Supply - Ensure electrical continuity between track sections and provide the 48V power input.
3. Accessories - Including end caps, joiners, mounting elements, and optional installation accessories to complete and secure the setup.



## Track Options

Choose the track version required for your project configuration.

### Surface

TRACK 48V SURFACE 1m	A338-11-00-   NT   WT
TRACK 48V SURFACE 2m	A338-12-00-   NT   WT
TRACK 48V SURFACE 3m	A338-13-00-   NT   WT



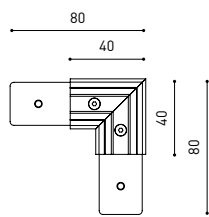
TRACK 48V SURFACE Corner 90° One Plane	A338-14-00-   NT   WT
TRACK 48V SURFACE T-Joint	A338-15-00-   NT
TRACK 48V SURFACE X-Joint	A338-16-00-   NT



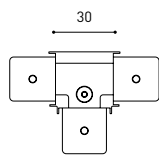
Corner 90° One Plane

T-Joint

X-Joint



Straight joiner included



Straight joiner included



Straight joiner included



### Trimless

TRACK 48V TRIMLESS 1m	A338-01-00-   N   WT
TRACK 48V TRIMLESS 2m	A338-02-00-   N   WT
TRACK 48V TRIMLESS 3m	A338-03-00-   N   WT

plasterboard ceiling, mandatory thickness 12,5mm. Recommended for installations where the profile can be installed before the false plasterboard ceiling.



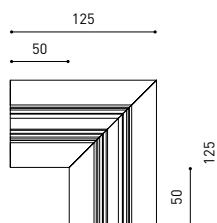
TRACK 48V TRIMLESS Corner 90° One Plane	A338-06-00-   N   WT
TRACK 48V TRIMLESS Corner 90° Two Planes	A338-07-00-   N   WT

plasterboard ceiling, mandatory thickness 12,5mm. Recommended for installations where the profile can be installed before the false plasterboard ceiling.



Corner 90° One Plane

Corner 90° Two Planes



TRIMLESS INSTALLATION GUIDE  
<https://youtu.be/tgGsQdaYe-w>



COLOUR | NT ■ RAL 9005 | WT □ RAL 9016 | N ■ RAL 9005 |

Electrical connections are not included. Please choose the required components from the Connectors section.

## Complementary track accessories

Use end caps, joiners, and gap covers to connect, close, and cleanly finish your track setup.

### Surface

End 48V

A338-00-06- | N T | WT |



End Feed 48V

A338-00-07- | N T | WT |



Surface Straight Joiner 48V

A338-00-11



### Trimless

Trimless Straight Joiners (2 units) 48V

A338-00-05- | N | WT |



### For all tracks

Cover Gap 1m 48V

A338-00-30- | N | W |



## Connector options

Connectors are required to provide electrical continuity between tracks, ensuring an uninterrupted 48V flow.

Live-End Connector 48V

A338-00-01- | N |



Central Connector 48V

A338-00-02- | N |



T-Joint Connector 48V

A450-00-07- | N |



Wireless Control 48V

0434-01-31- | N | W | Casambi



Corner 90° Connector One Plane 48V

A338-00-24- | N | W |

\*Not suitable for trimless version



L-Joint Connector 48V

A338-00-12- | N |



X-Joint Connector 48V

A450-00-08- | N |



COLOUR | N ■ RAL 9005 | W □ RAL 9016 |





48V track lighting systems are low-voltage lighting solutions based on electrified tracks. The track serves both as a physical structure and as a power carrier, allowing light modules to be placed and repositioned as needed, offering flexibility, safety, and energy efficiency. Ideal for projects that demand minimalist design, high performance, and adaptability.

To configure your 48V system, you'll need to combine the following components:

1. Tracks - Available in surface, trimless, surface short, suspended (using suspension accessories with the surface track), and indirect light versions. They form the structural and electrical base of the system.
2. Connectors & Power Supply - Ensure electrical continuity between track sections and provide the 48V power input.
3. Accessories - Including end caps, joiners, mounting elements, and optional installation accessories to complete and secure the setup.



## Track Options

Choose the track version required for your project configuration.

		P	CCT	Flux	LOR	L
TRACK 48V + IND. LIGHT 1400	A466-01-20-   NT   WT	18,3W	2700K	2320lm	70%	1402mm
	A466-01-21-   NT   WT	18,3W	3000K	2380lm	70%	1402mm
	A466-01-22-   NT   WT	18,3W	4000K	2585lm	70%	1402mm
TRACK 48V + IND. LIGHT 2800	A466-02-20-   NT   WT	39,2W	2700K	5210lm	70%	2802mm
	A466-02-21-   NT   WT	39,2W	3000K	5360lm	70%	2802mm
	A466-02-22-   NT   WT	39,2W	4000K	5820lm	70%	2802mm

48V | III | IP20 | CRI>90 | L90B5 >50,000h



## Complementary track accessories

Use end caps, joiners, and gap covers to connect, close, and cleanly finish your track setup.

Indirect Light Suspension kit 48V (2 units)

A466-00-03- | NT | WT |

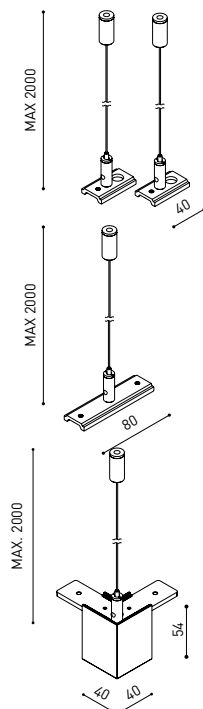
Suspension straight joiner kit 48V

A466-00-04- | NT | WT |

Suspension 90° Corner joiner kit 48V

A466-00-05- | NT | WT |

\*Electrical connection not included.



End 48V

A338-00-06- | NT | WT |

End Feed 48V

A338-00-07- | NT | WT |

Cover Gap 1m 48V

A338-00-30- | N | W |



COLOUR | NT ■ RAL 9005 | WT □ RAL 9016 | N ■ RAL 9005 |

Electrical connections are not included. Please choose the required components from the Connectors section.

## Connector options

Connectors are required to provide electrical continuity between tracks, ensuring an uninterrupted 48V flow.

### Live-End Connector 48V

A338-00-01- | N | W |



### Corner 90° Connector One Plane 48V

A338-00-24- | N | W |



### Central Connector 48V

A338-00-02- | N | W |



### L-Joint Connector 48V

A338-00-12- | N | W |



### T-Joint Connector 48V

A450-00-07- | N |



### X-Joint Connector 48V

A450-00-08- | N |



### Wireless Control 48V

0434-01-31- | N | W | Casambi



## Power Supply Options

Select the appropriate power feed to deliver 48V to the system based on your track layout and installation type.

### Constant Voltage LED POWER SUPPLY

	P	V	D (A x B x C)
0434-01-61*   N   W	100W	48V	298 x 19 x 16mm
0434-01-69*   N   W	250W	48V	268 x 22 x 40mm
0434-01-62	150W	48V	350 x 30 x 18mm
0434-01-80	250W	48V	400 x 40 x 22mm

220 V~ | \*To be installed inside the track.



0434-01-61\*



0434-01-69\*



0434-01-62



0434-01-80

### DROP VOLTAGE TABLE

POWER [W]	CABLE SECTION (mm <sup>2</sup> )	CABLE LENGTH (m)			
		5	10	20	30
100	0,75	50	50	X	X
	1,5	50	50	40	25
150	0,75	40	15	X	X
	1,5	50	40	20	X
250	0,75	20	X	X	X
	1,5	35	20	X	X

## Connection diagrams:



Aside box



Remote driver installation



Integrated driver installation

COLOUR | N ■ RAL 9005 |

## Other accessories

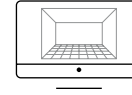
### Suspension components

For suspension aside box installation replace the power supply:

#### Wired Power Supply Case 48V

A338-00-25-	NT   WT	150W	NO DIM
A338-00-26-	NT   WT	150W	DIM

220 V-  
240 V-  
INCL



#### PRODUCT CONFIGURATOR

Use our online configurator to design your own custom product layout. The tool will guide you through the process and automatically calculate the required drivers and accessories.

[Start your configuration →](#)

Required for remote or integrated driver installation:

#### Suspension Feed Kit 48V

A338-00-16-	N   W	NO DIM
A338-00-17-	N   W	DIM

For remote power supply



A338-00-27-	N   W	NO DIM
-------------	-------	--------

A338-00-28-	N   W	DIM
-------------	-------	-----

For power supply inside the track

### Wire trimless accessories

For installing the suspension system cleanly and discreetly – with no visible ceiling boxes or mounting elements.

#### FEED

##### Mains Trimless\*

A023-00-01-	W   N	NO DIM
-------------	-------	--------

##### Mains Thick Trimless\*

A023-00-02-	W   N	DIM
-------------	-------	-----



#### FASTENING

##### Steel Cable Trimless\*

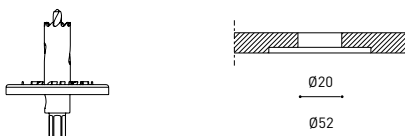
A023-00-05-	W   N	
-------------	-------	--



\* As many pieces as needed according to your product

#### TRIMLESS TOOL D20 X D52mm

A478-00-01



COLOUR | NT ■ RAL 9005 | WT □ RAL 9016 | N ■ RAL 9005 | W □ RAL 9016 |



Fuente de luz (LED) reemplazable por un profesional autorizado  
 Replaceable (LED only) light source by an authorized professional.  
 Source lumineuse (LED) remplaçable par un professionnel agréé  
 Sorgente luminosa (LED) sostituibile da parte di un professionista autorizzato  
 Austauschbare (LED) Lichtquelle durch einen autorisierten Fachmann



Equipo de control reemplazable por un profesional autorizado  
 Replaceable control gear by an authorized professional  
 Dispositif de commande remplaçable par un professionnel agréé  
 Alimentatore sostituibile da parte di un professionista autorizzato  
 Auswechselbares Betriebsgerät durch autorisierten Fachmann

## Instrucciones para el final de vida y la eliminación de los componentes:

### Instructions on end-of-life and component disposal:

### Instructions pour la gestion des composants en fin de vie et leur mise au rebut :

### Istruzioni per il fine vita e lo smaltimento dei componenti:

### Anweisungen zur entsorgung der Leuchtenkomponenten:



Interrumpir la alimentación del aparato  
 Cut the power supply to the luminaire  
 Couper l'alimentation du luminaire  
 Interrompere l'alimentazione dell'apparecchio  
 Stromversorgung der Leuchte unterbrechen



Quitar la(s) fuente(s) de luz para el desecho  
 Remove light source(s) for disposal  
 Retirer la (les) source(s) lumineuse(s) pour l'élimination  
 Rimuovere la/le sorgente/e di luce per lo smaltimento  
 Lichtquelle(n) zur Entsorgung entfernen



Quitar la batería para el desecho  
 Remove the battery for decommissioning  
 Retirer la batterie pour sa mise au rebut  
 Rimuovere la batteria per la dismissione  
 Die Batterie ordnungsgemäß entsorgen



Quitar el equipo de control para el desecho  
 Remove control gear for disposal  
 Retirer le dispositif de commande pour l'élimination  
 Rimuovere l'alimentatore per lo smaltimento  
 Betriebsgerät zur Entsorgung ausbauen



Enviar los materiales a un centro de recogida RAEE  
 Send the materials to a WEEE collection centre  
 Envoyer les matériaux dans une déchetterie DEEE  
 Inviare i materiali ad un centro di raccolta RAEE  
 Die Materialien in einem WEEE-Zentrum entsorgen

